



Thule Rapid System Kit 1078

> Instructions

MITSUBISHI Colt, 3-dr Hatchback, 96-04

The diagram is divided into three main sections:

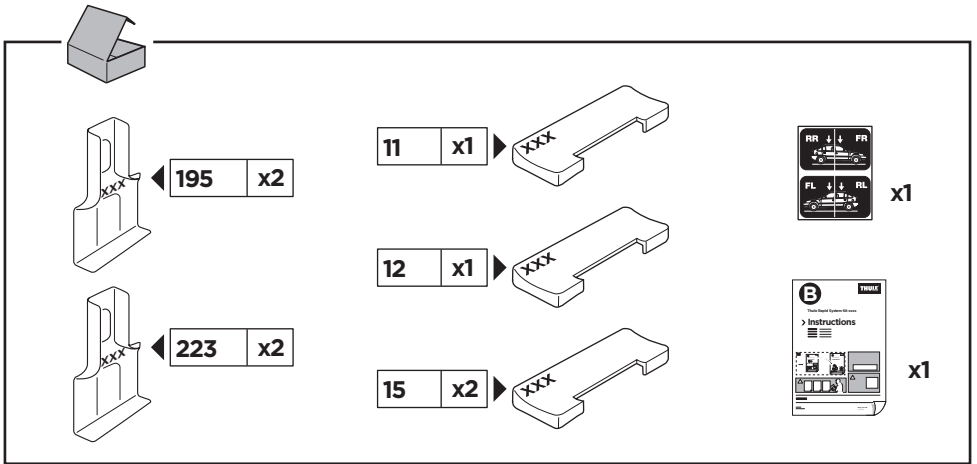
- Top Left:** A dashed box containing an information icon (i), a warning triangle, an arrow pointing to document 'B' (Thule Rapid System 1078 Instructions), a pencil writing on a document, and an arrow pointing to document 'A' (Thule Rapid System 754 Instructions).
- Top Right:** A weight calculation diagram. It shows a bag labeled 'xx kg / xx lbs' plus a rack labeled '7 kg / 15,4 lbs' and two screws labeled '3 kg / 6,6 lbs'. Below this, an equals sign leads to a box containing 'Max. 50 kg' and 'Max. 110 lbs'.
- Bottom Left:** A dashed box containing a warning triangle, three instruction documents (A, B, and Security), and a silhouette of a person reading a document.
- Bottom Right:** A diagram of a car with arrows indicating the rack's position on the roof. A speedometer graphic shows a warning triangle between 40 km/h (25 Mph) and 130 km/h (80 Mph), with a curved arrow indicating a speed limit of 80 km/h (50 Mph).

ISO 11154-E

141078

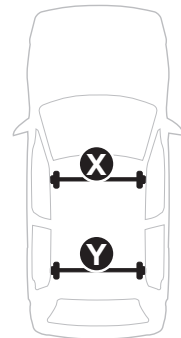
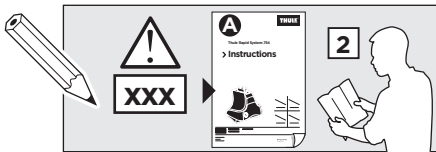
C.20140217
519-1078-01

Bring your life
thule.com



1

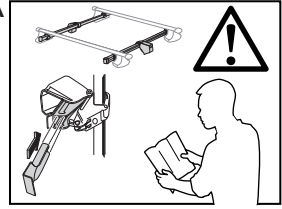
| | X (scale) | X (mm) | X (inch) |
|---|-------------|------------|-------------------------------------|
| MITSUBISHI Colt, 3-dr Hatchback, 96-04 | 25,5 | 906 | 35 ⁵/₈ |



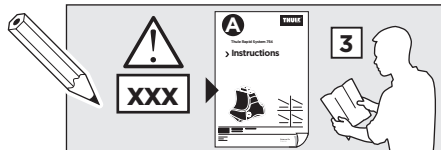
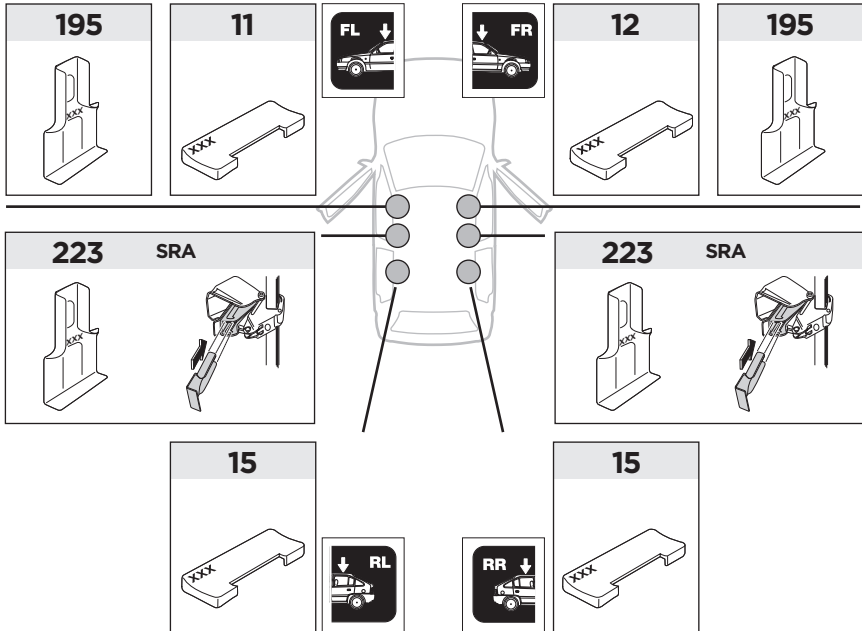
| | Y (scale) | Y (mm) | Y (inch) |
|---|-------------|------------|-------------------------------------|
| MITSUBISHI Colt, 3-dr Hatchback, 96-04 | 22,5 | 876 | 34 ¹/₂ |

2

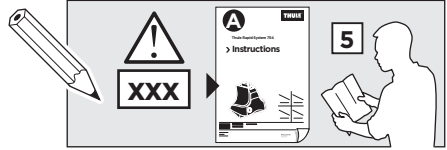
SRA



MITSUBISHI Colt, 3-dr Hatchback, 96-04



3



| | W (mm) | Z (mm) | Y (mm) | W (inch) | Z (inch) | Y (inch) |
|--|------------|------------|------------|----------|---------------|---------------|
| MITSUBISHI Colt , 3-dr Hatchback, 96-04 | 230 | 700 | 350 | 9 | 27 1/2 | 13 3/4 |

