

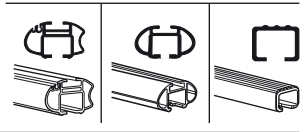
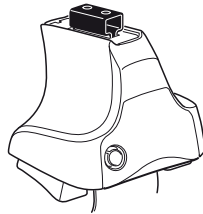
Kit 1133

DAIHATSU Sirion, 5-dr MPV, 98-04

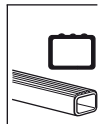
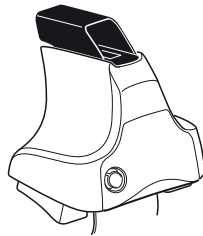
DAIHATSU Storia, 5-dr MPV, 98-04

TOYOTA Duet, 5-dr MPV, 98-04

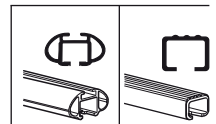
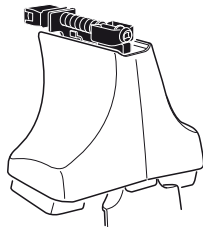
480R
754



480



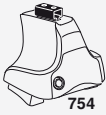
750



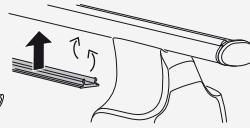
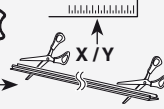
Kit



3

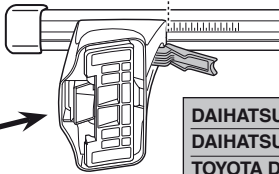
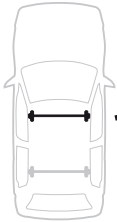


754

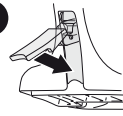


750

1



2

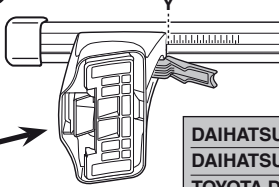


	X
DAIHATSU Sirion, 5-dr MPV, 98-04	29
DAIHATSU Storia, 5-dr MPV, 98-04	29
TOYOTA Duet, 5-dr MPV, 98-04	29

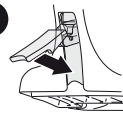
X

29
29
29

1



2



	Y
DAIHATSU Sirion, 5-dr MPV, 98-04	27
DAIHATSU Storia, 5-dr MPV, 98-04	27
TOYOTA Duet, 5-dr MPV, 98-04	27

Y

27
27
27

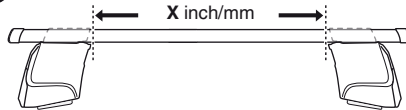


480R

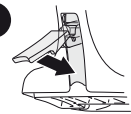


480

1



2



DAIHATSU Sirion, 5-dr MPV, 98-04	37"	941 mm
DAIHATSU Storia, 5-dr MPV, 98-04	37"	941 mm
TOYOTA Duet, 5-dr MPV, 98-04	37"	941 mm

X inch

X mm

37"

941 mm

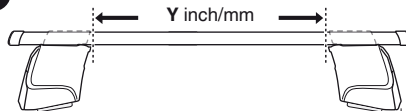
37"

941 mm

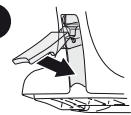
37"

941 mm

1



2



DAIHATSU Sirion, 5-dr MPV, 98-04	36 1/4"	921 mm
DAIHATSU Storia, 5-dr MPV, 98-04	36 1/4"	921 mm
TOYOTA Duet, 5-dr MPV, 98-04	36 1/4"	921 mm

Y inch

Y mm

36 1/4"

921 mm

36 1/4"

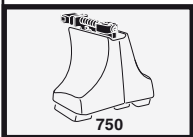
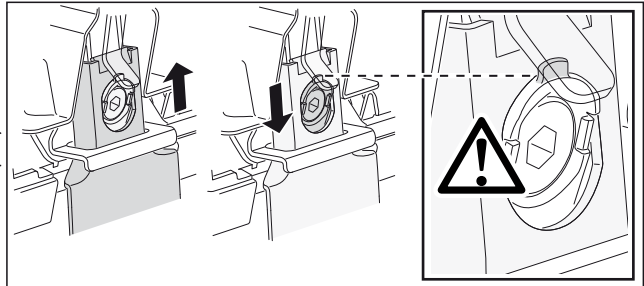
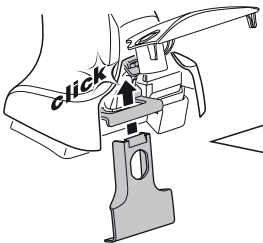
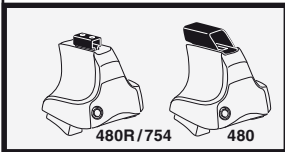
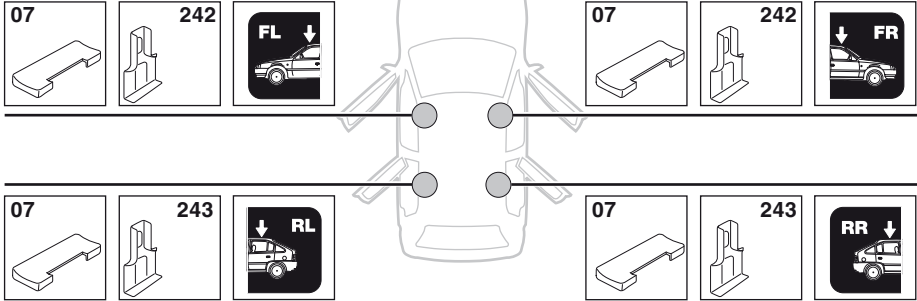
921 mm

36 1/4"

921 mm

4

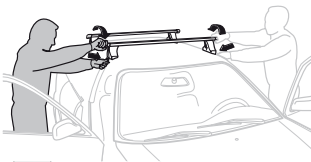
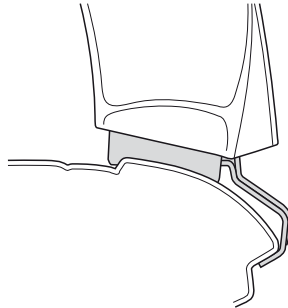
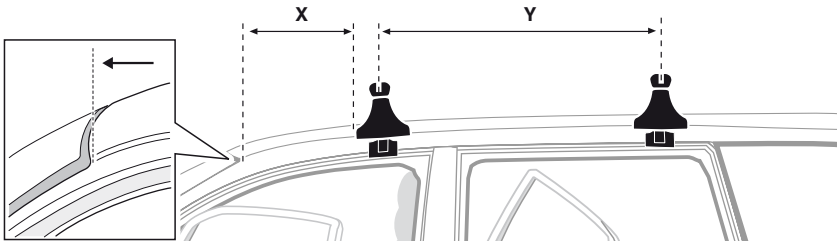
DAIHATSU Sirion, 5-dr MPV, 98-04
DAIHATSU Storia, 5-dr MPV, 98-04
TOYOTA Duet, 5-dr MPV, 98-04



5



	X mm	Y mm	X inch	Y inch
DAIHATSU Sirion , 5-dr MPV, 98-04	270 mm	680 mm	10 ⁵ / ₈ "	26 ³ / ₄ "
DAIHATSU Storia , 5-dr MPV, 98-04	270 mm	680 mm	10 ⁵ / ₈ "	26 ³ / ₄ "
TOYOTA Duet , 5-dr MPV, 98-04	270 mm	680 mm	10 ⁵ / ₈ "	26 ³ / ₄ "



GB/US Tighten alternately
D Die Schrauben abwechselnd anziehen
F Serrer alternativement chaque côté
NL Afwisselend aan de linker- en de rechterkant aandraaien
I Alternare il serraggio delle viti
E Apretar alternativamente
PT Aperte alternadamente
S Dra åt växelvis
FIN Kierrä vuorotellen
EST Pinguldage vaheldumisi
LAT Pievelciēt pamīšus
LIT Užsukinėkite pakaitomis
PL Śruby dokręcaj naprzemiennie
RU Затягивайте попеременно

CZ Pokręťta багаžníka dokręcaj dokręcaj naprzemiennie.
SK Doťahujte striedavo
SLO Privijajte izmenično.
HR Naizmjenično zategnite
HU Egy mástól fűggetlenül szorítandó
GR Σφιγγετε εναλλάξ
TR Dönüşümlü sıkın

中文 交替拧紧

한국어 번갈아 가며 조이십시오.

日本語 交互に締め付けてください。

ไทย ขันในแบบสลับ

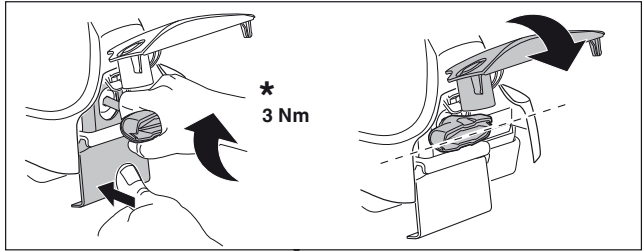
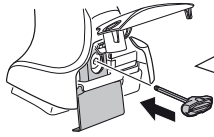
6



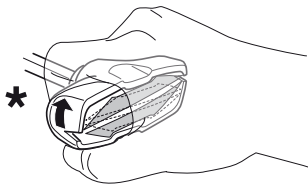
480R/754



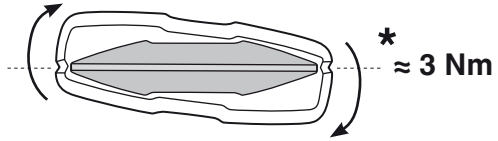
480



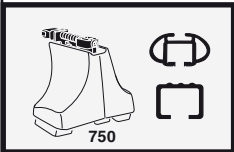
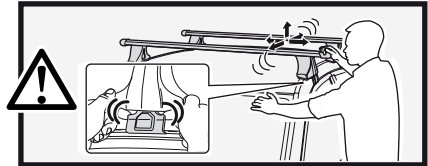
*
3 Nm



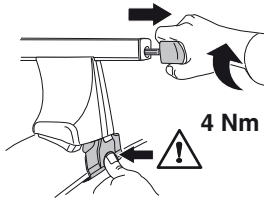
*



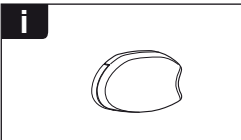
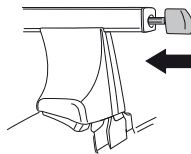
*
≈ 3 Nm



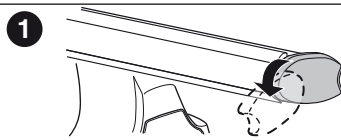
750



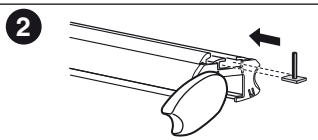
4 Nm



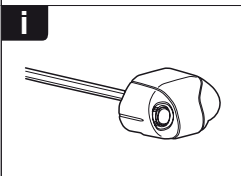
i



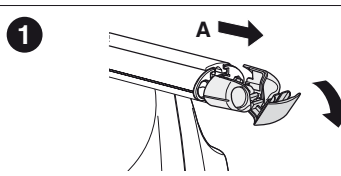
1



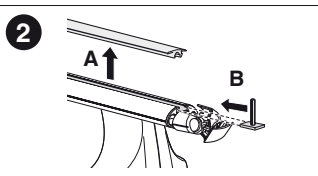
2



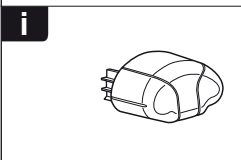
i



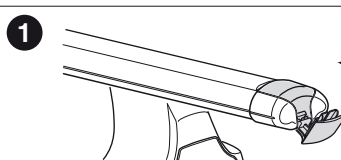
1



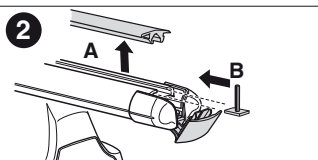
2



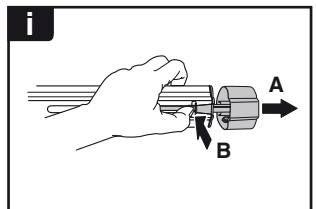
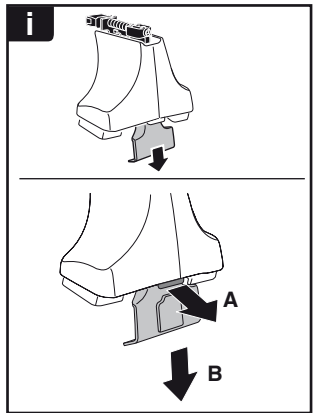
i



1



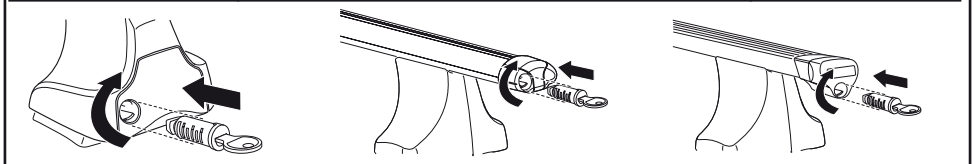
2



THULE
SWEDEN
**ONE
KEY
SYSTEM**



- 544 (x4)
- 596 (x6)
- 588 (x8)
- NA 510 (x10)
- EUR 452 (x12)
- ASIA



WW ▶ Thule Sweden AB, Box 69, 330 33 Hillerstorp, SWEDEN
NA ▶ Thule Inc., 42 Silvermine Road, Seymour, Connecticut 06483, USA

info@thule.com
customer.service@thule.com

www.thule.com